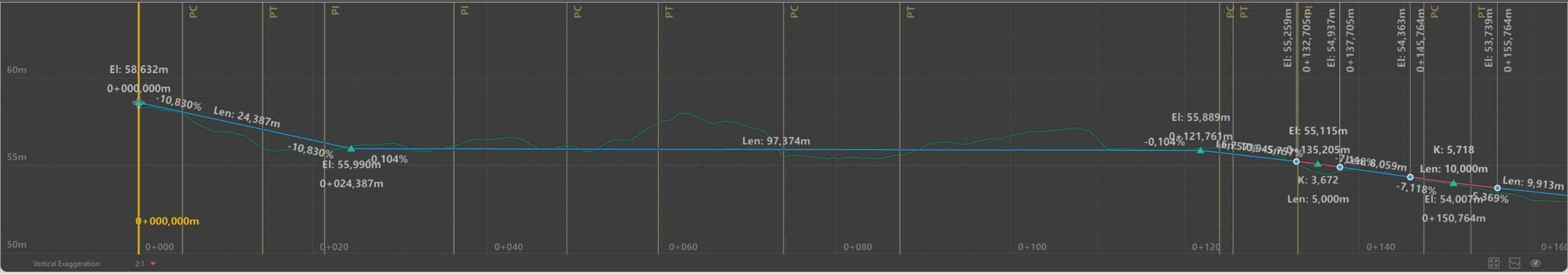


PROFILE VIEW [ COMPONENT ROAD 6 ]



Vertical Exaggeration: 2:1

Krister Ingebretsen | Conceptual View | Bordviga\_alternativ\_ve...



Road

Enter a name

---

**Attributes**

Function: Freeway

Speed: 110,0km/h

Design Standards: AASHTO\_Metric\_2011

Superelevation:

Lane Marking:

---

**Geometry**

Length: 383,042 m

Elevation Range: 46,540m - 58,632m

Grade Range: 0,10% - 10,83%

---

**Description**

Click to start typing...

---

**Grading**

Cut Material: Various values

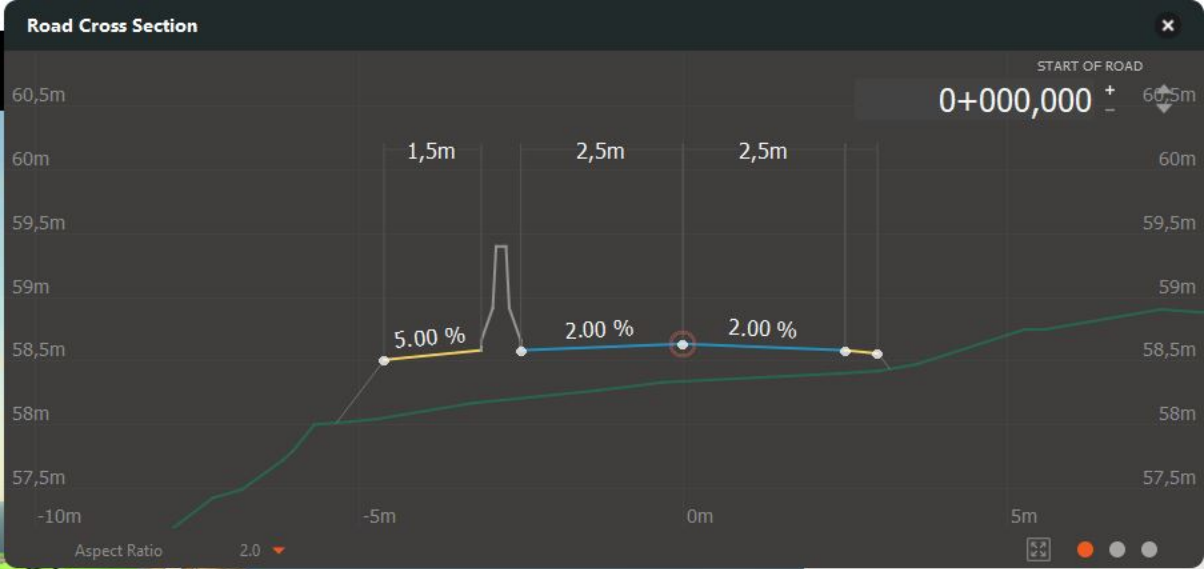
Fill Material: Various values

Grading Method: Fixed Slope

Grading Limit: Various values

Station : 0+095,481m Offset : 34,539m  
 X: 7.007686 Y: 58.074339 Z: 36.040445m

CUT / FILL indicator and calculator icon.



Grade Range: 0.10% - 10.83%

**Description**

Click to start typing...

**Grading**

Material: Various values

Grading Method: Fixed Slope

Grading Limit: Various values

Cut Slope: 0.500: 1

Fill Slope: Various values

**Advanced**

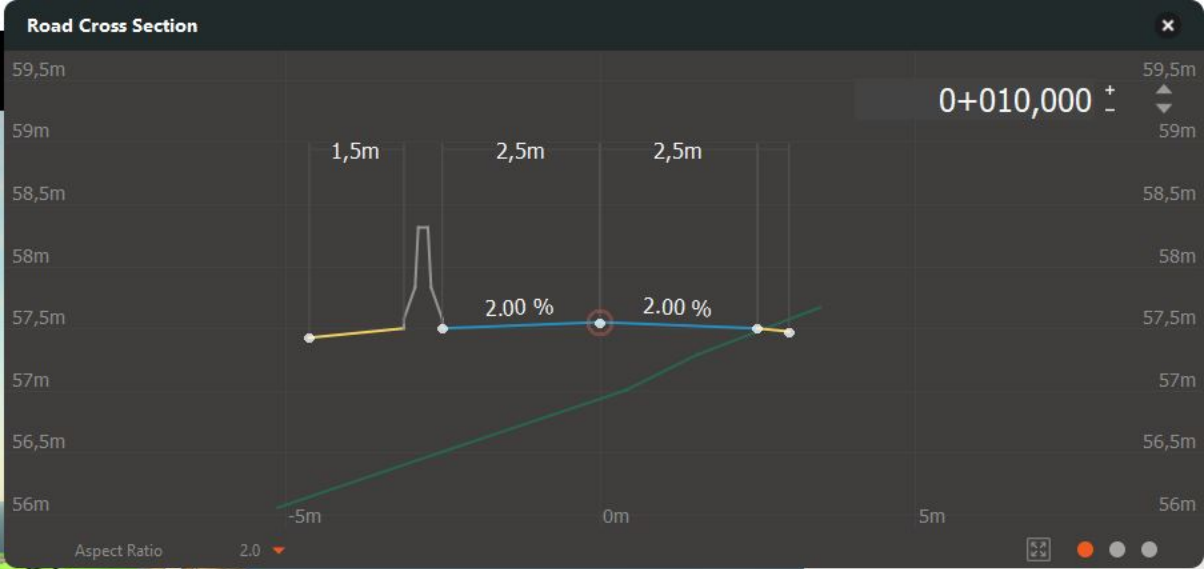
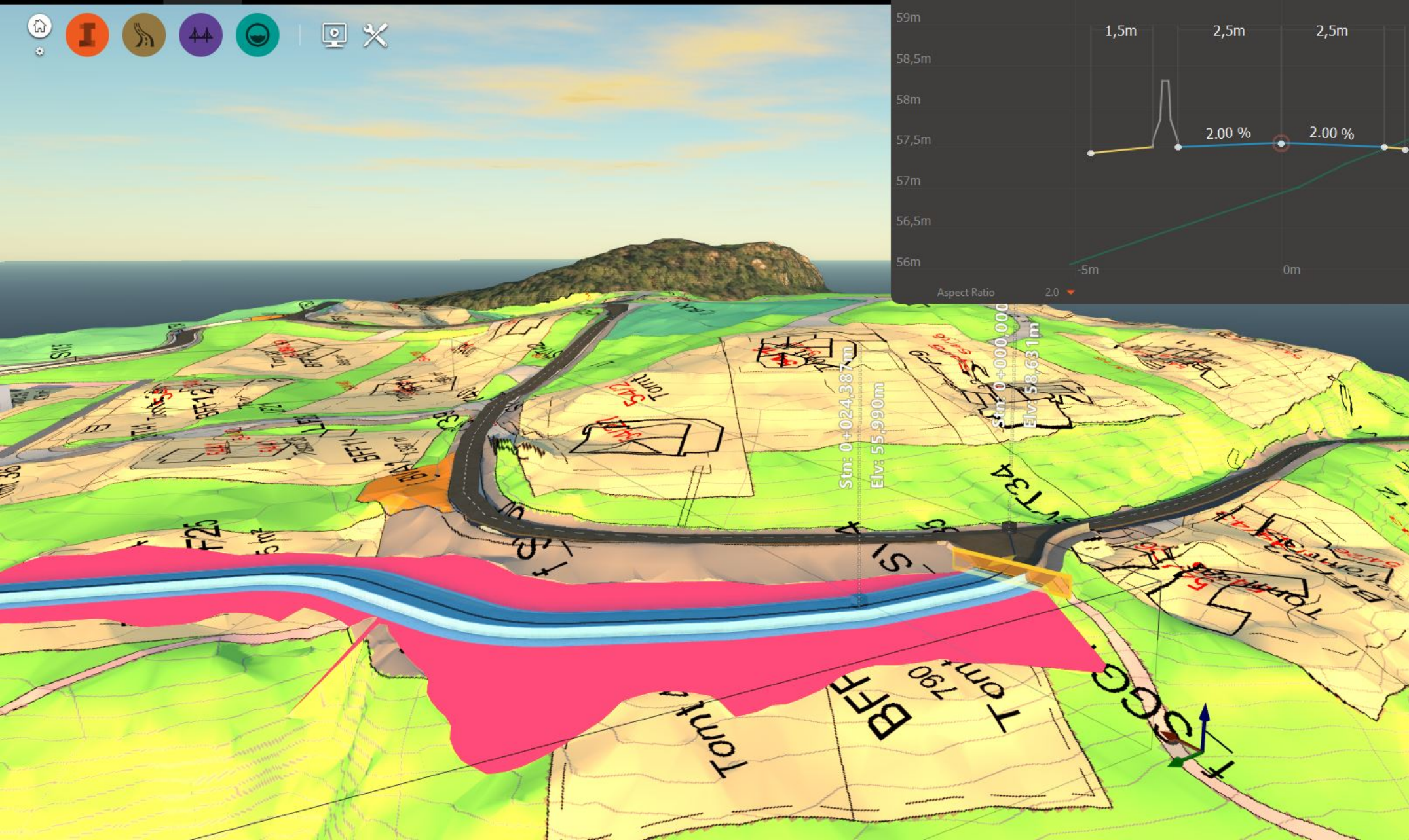
Data Source: Sketched Feature(s)

Tag:

User Data:

Tooltip:





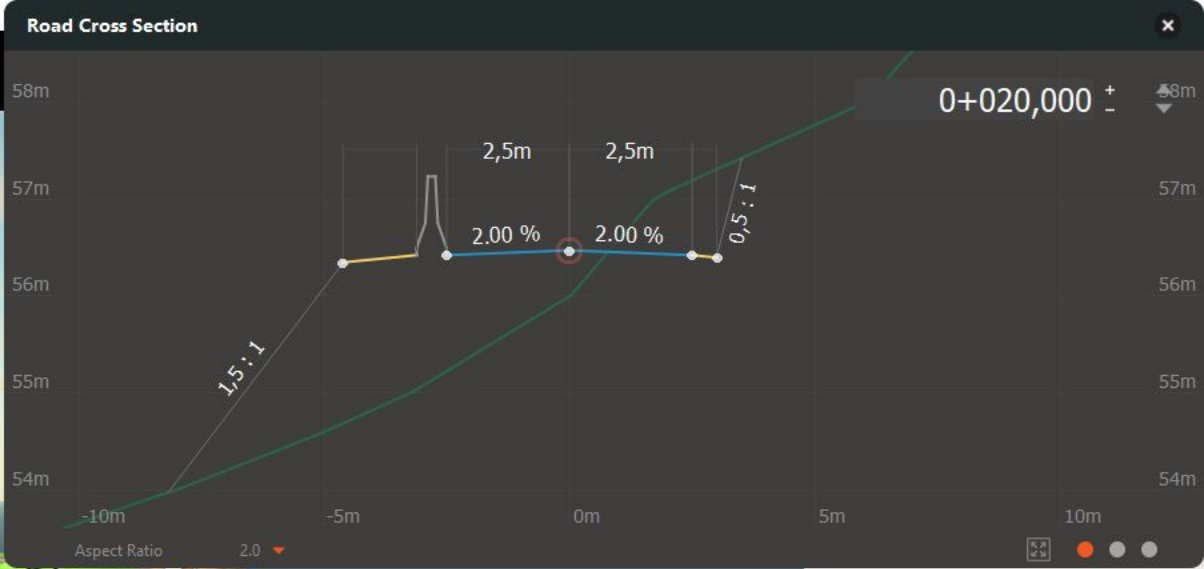
Grade Range 0.10 % - 10.83 %

Description  
Click to start typing...

- #### Grading
- Material: Various values
  - Grading Method: Fixed Slope
  - Grading Limit: Various values
  - Cut Slope: 0.500 : 1
  - Fill Slope: Various values

- #### Advanced
- Data Source: Sketched Feature(s)
  - Tag
  - User Data
  - Tooltip





0+020,000 ± 58m

Grade Range 0.10 % - 10.83 %

#### Description

Click to start typing...

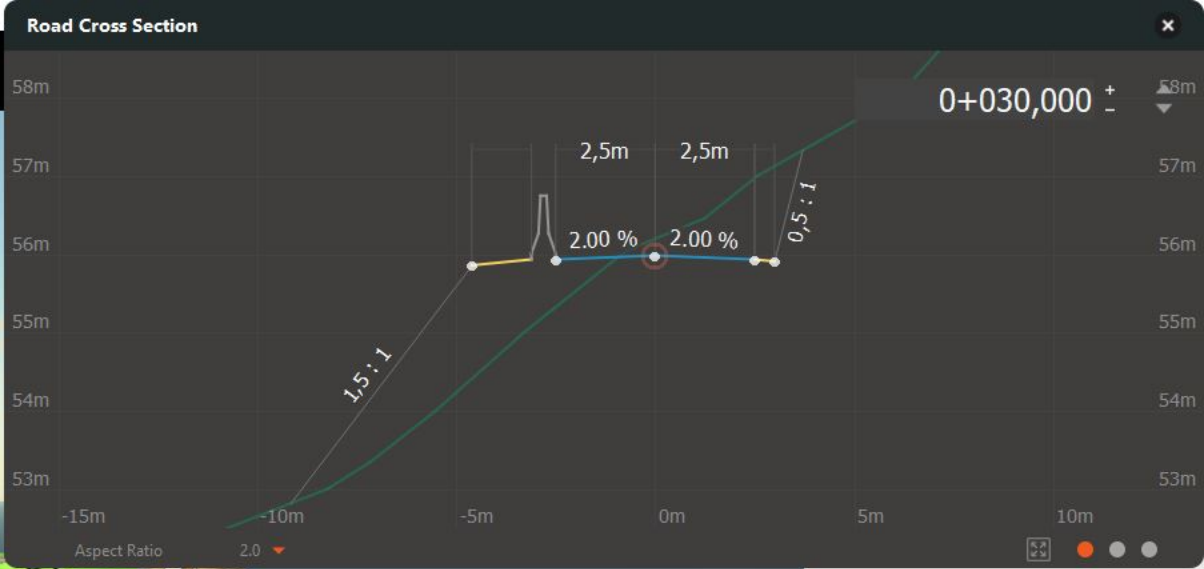
#### Grading

Material	Various values
Grading Method	Fixed Slope
Grading Limit	Various values
Cut Slope	0.500 : 1
Fill Slope	Various values

#### Advanced

Data Source	Sketched Feature(s)
Tag	
User Data	
Tooltip	





Grade Range: 0.10% - 10.83%

Description: Click to start typing...

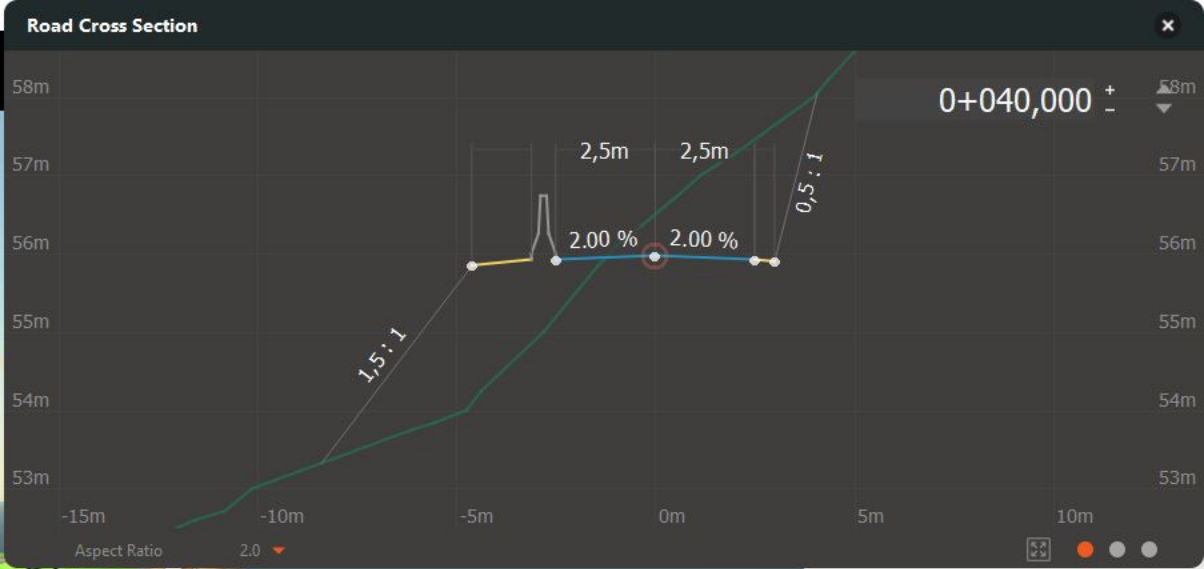
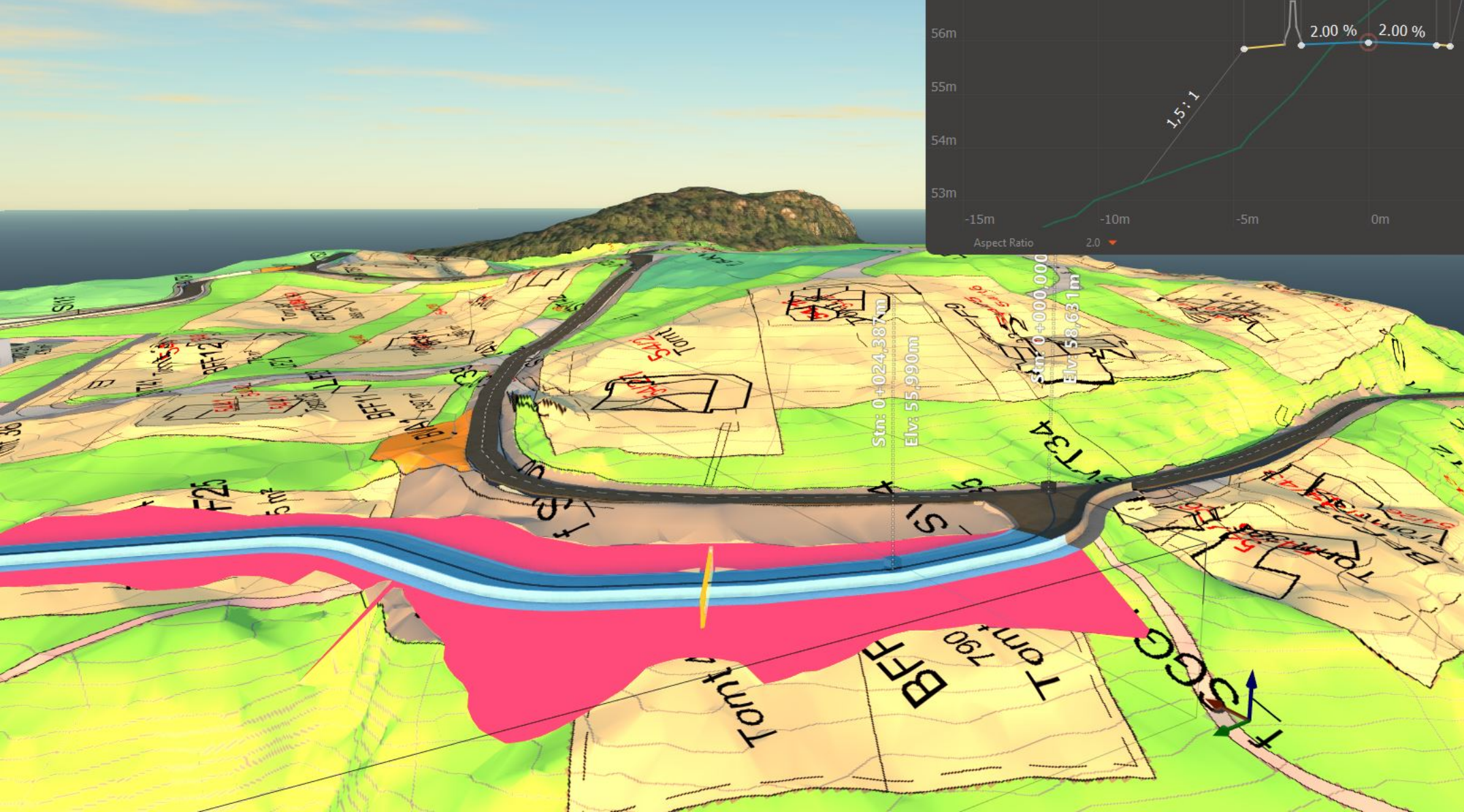
Grading

Material	Various values
Grading Method	Fixed Slope
Grading Limit	Various values
Cut Slope	0.500:1
Fill Slope	Various values

Advanced

Data Source	Sketched Feature(s)
Tag	
User Data	
Tooltip	





**Grade Range** 0.10% - 10.83%

**Description**  
Click to start typing...

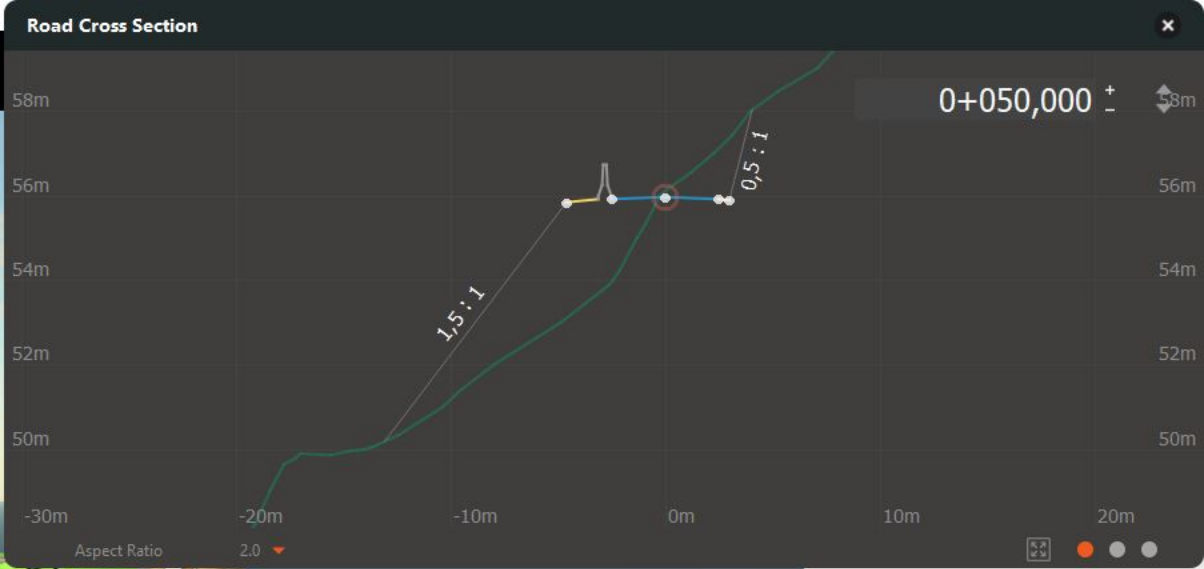
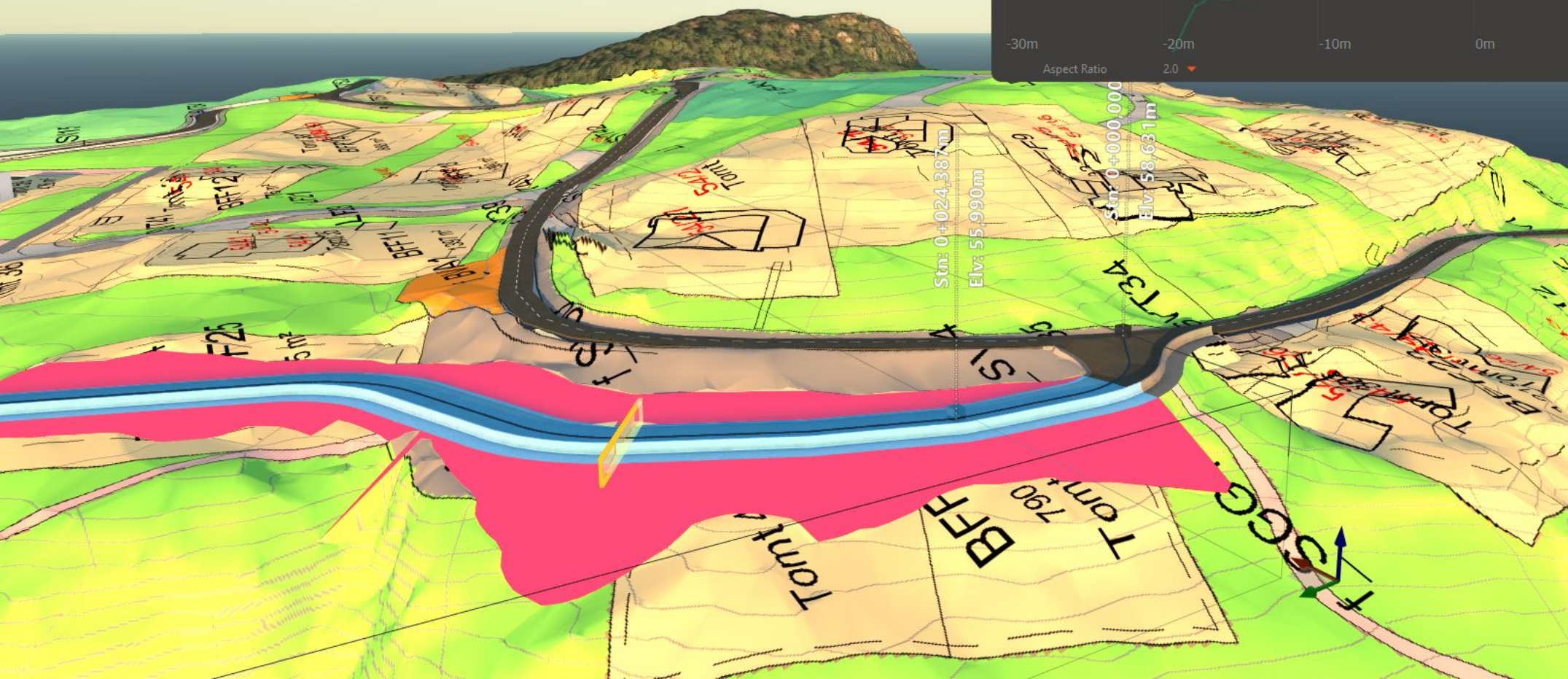
**Grading**

Material	Various values
Grading Method	Fixed Slope
Grading Limit	Various values
Cut Slope	0.500:1
Fill Slope	Various values

**Advanced**

Data Source	Sketched Feature(s)
Tag	
User Data	
Tooltip	





Grade Range 0.10% - 10.83%

**Description**

Click to start typing...

**Grading**

Material	Various values
Grading Method	Fixed Slope
Grading Limit	Various values
Cut Slope	0.500 : 1
Fill Slope	Various values

**Advanced**

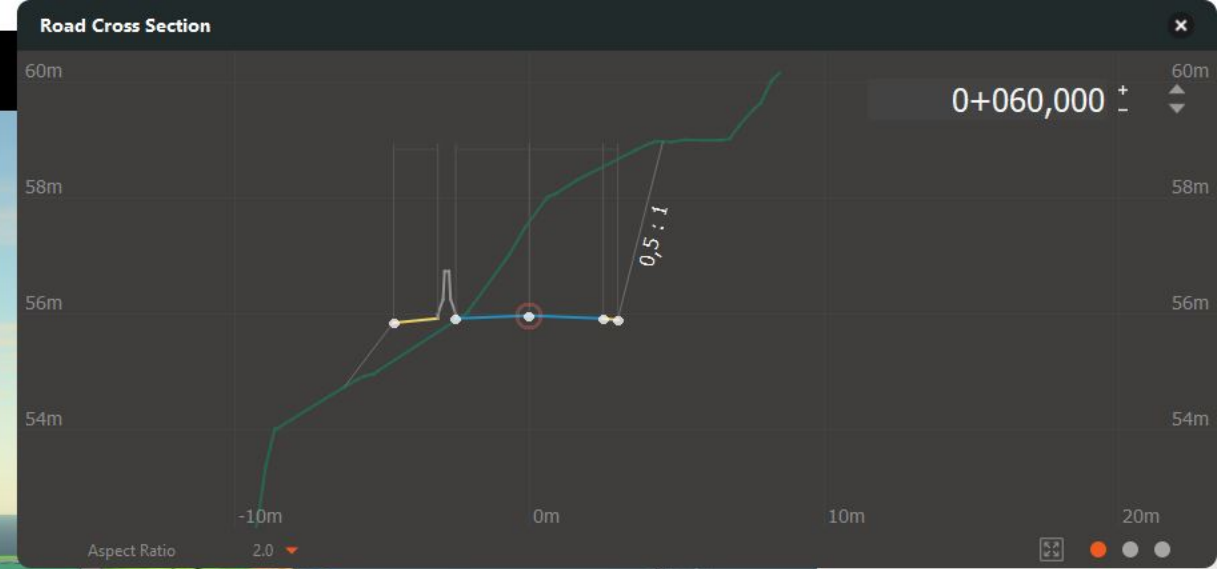
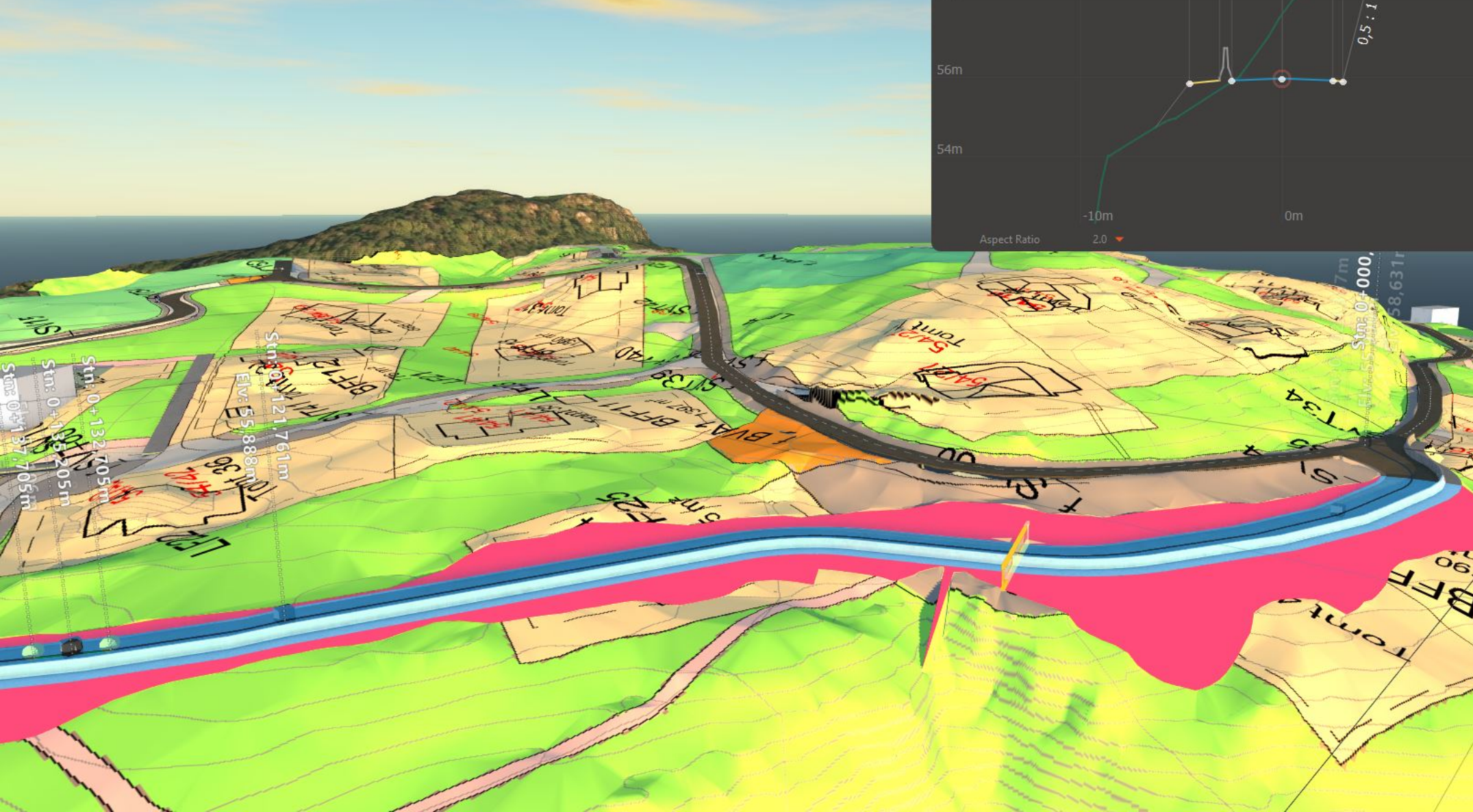
Data Source *Sketched Feature(s)*

Tag

User Data

Tooltip





**Grade Range** 0.10% - 10.83%

**Description**

Click to start typing...

**Grading**

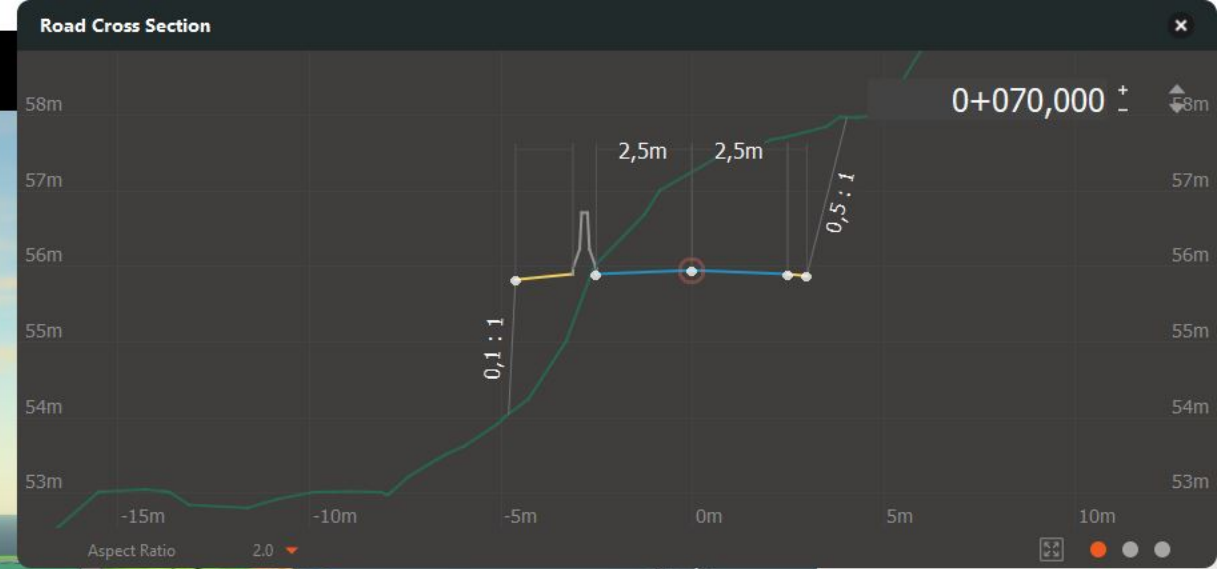
Material	Various values
Grading Method	Fixed Slope
Grading Limit	Various values
Cut Slope	0.500 : 1
Fill Slope	Various values

**Advanced**

Data Source	Sketched Feature(s)
Tag	
User Data	
Tooltip	







**Grade Range** 0.10% - 10.83%

**Description**

Click to start typing...

**Grading**

Material: Various values

Grading Method: Fixed Slope

Grading Limit: Various values

Cut Slope: 0.500 : 1

Fill Slope: Various values

**Advanced**

Data Source: Sketched Feature(s)

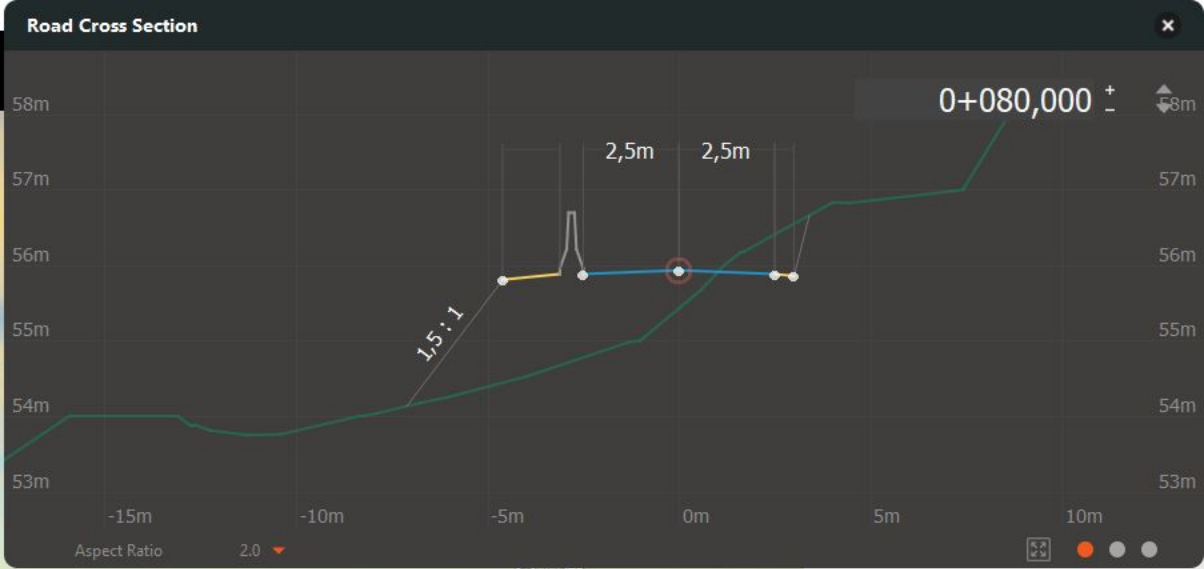
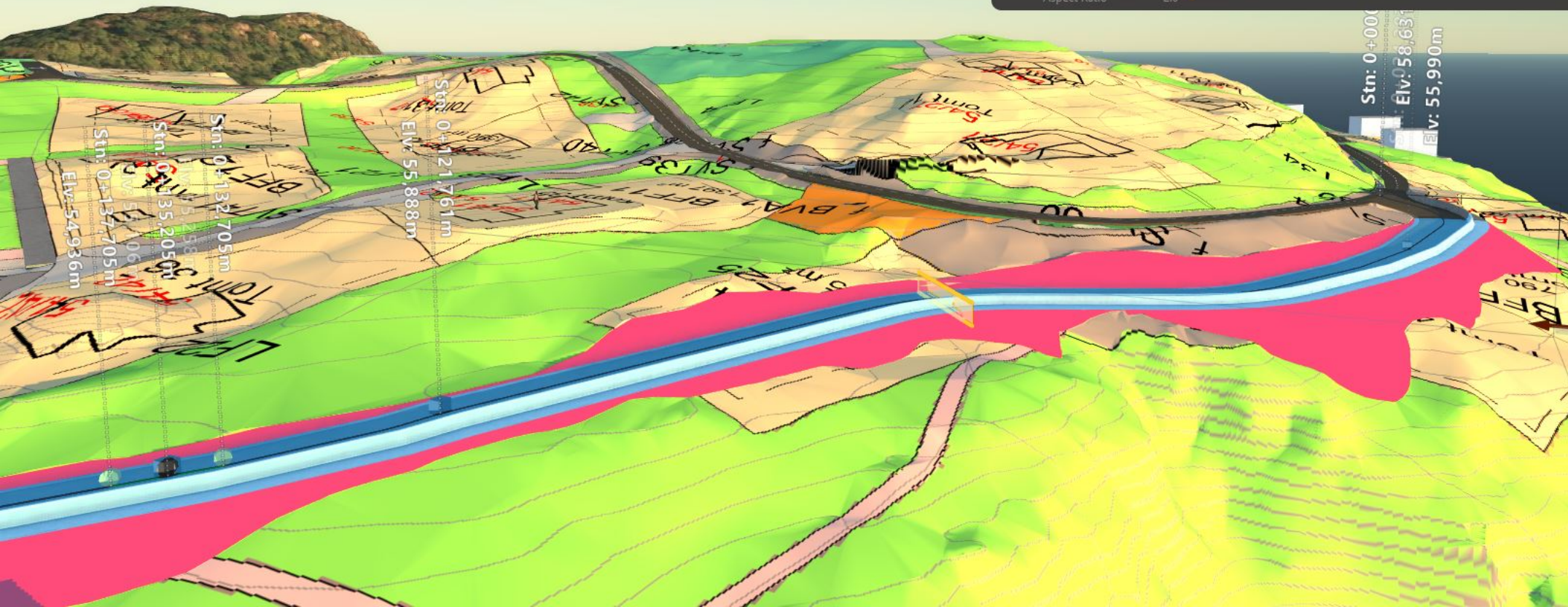
Tag

User Data

Tooltip

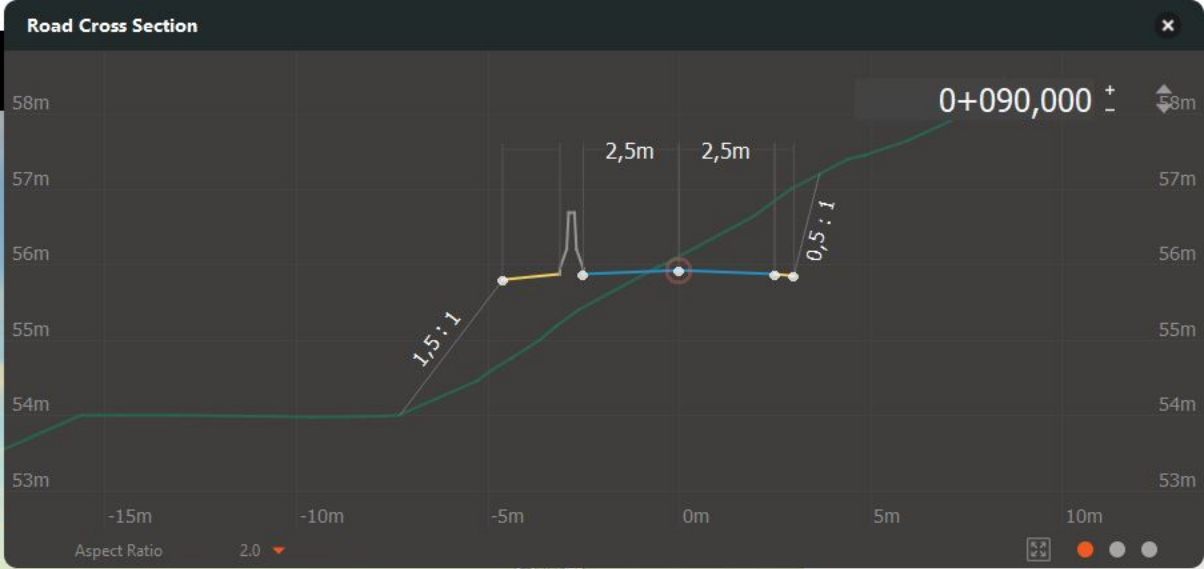
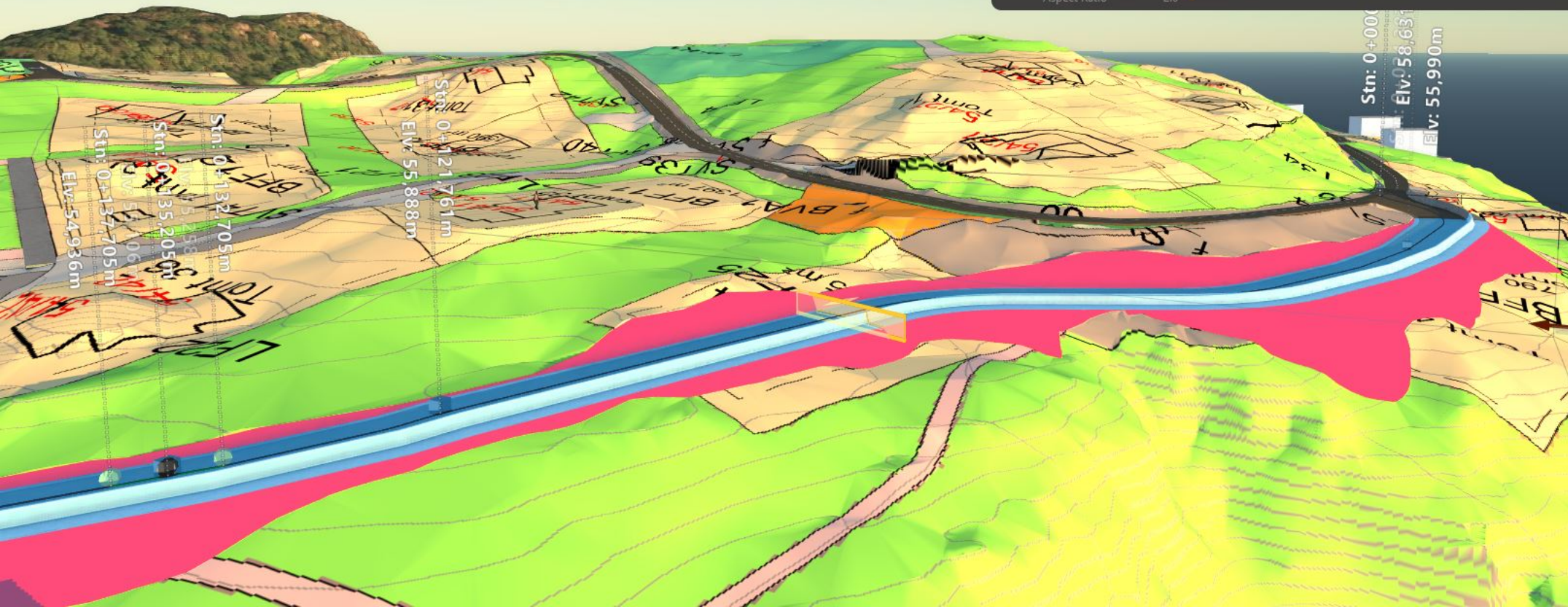
Station : 0+299,684m Offset : 546,115m  
 X: 7.016318 Y: 58.071410 Z: 62.743381 m





Grade Range	0.10% - 10.83%
Description	Click to start typing...
Grading	
Material	Various values
Grading Method	Fixed Slope
Grading Limit	Various values
Cut Slope	0.500: 1
Fill Slope	Various values
Advanced	
Data Source	Sketched Feature(s)
Tag	
User Data	
Tooltip	





Grade Range 0.10% - 10.83%

Description

Click to start typing...

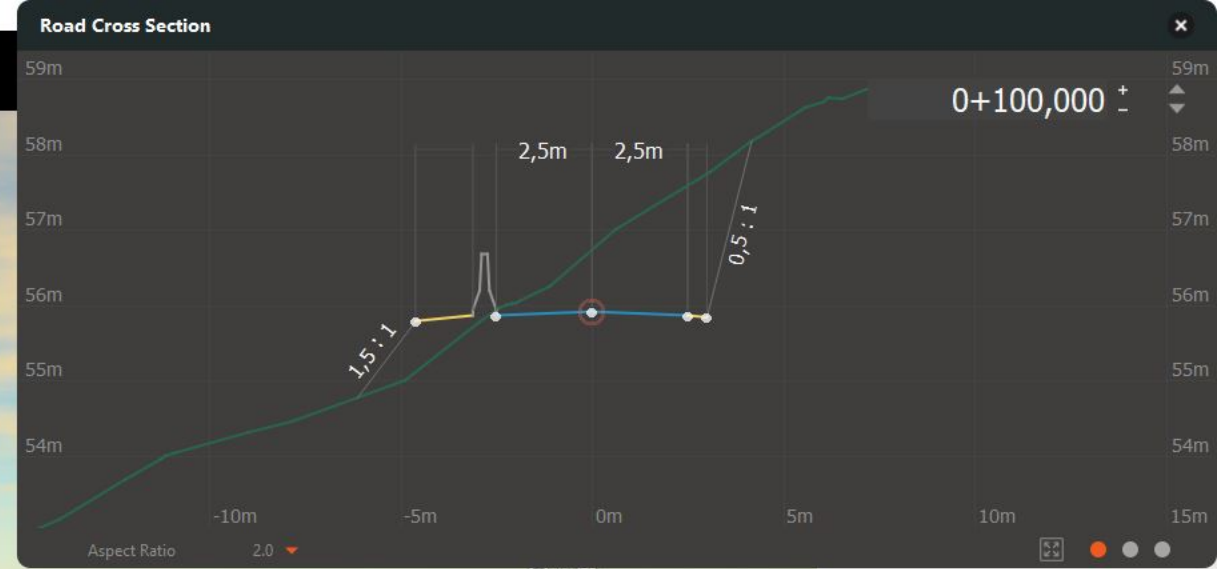
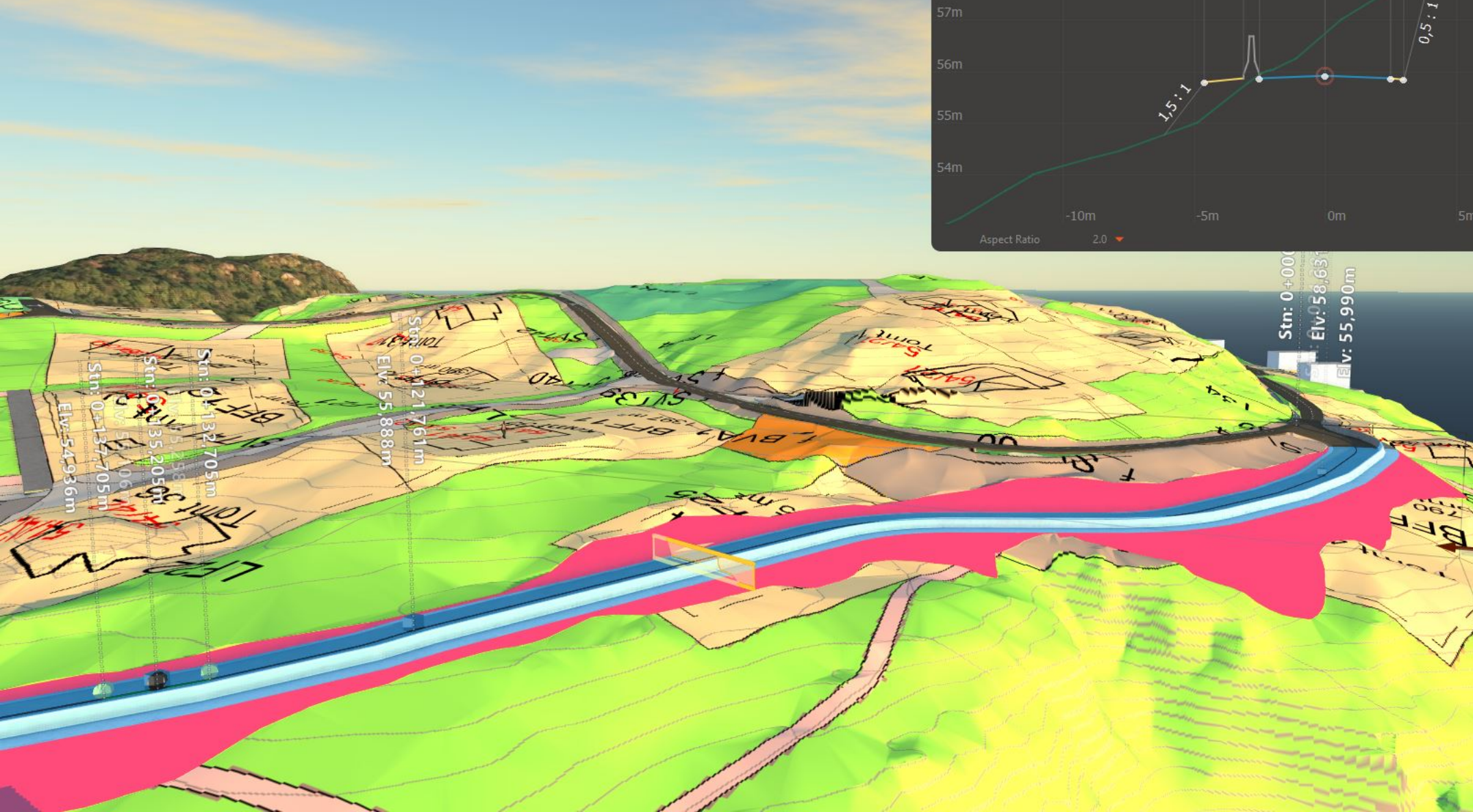
Grading

Material	Various values
Grading Method	Fixed Slope
Grading Limit	Various values
Cut Slope	0.500: 1
Fill Slope	Various values

Advanced

Data Source	Sketched Feature(s)
Tag	
User Data	
Tooltip	





**Grade Range** 0.10% - 10.83%

**Description**  
Click to start typing...

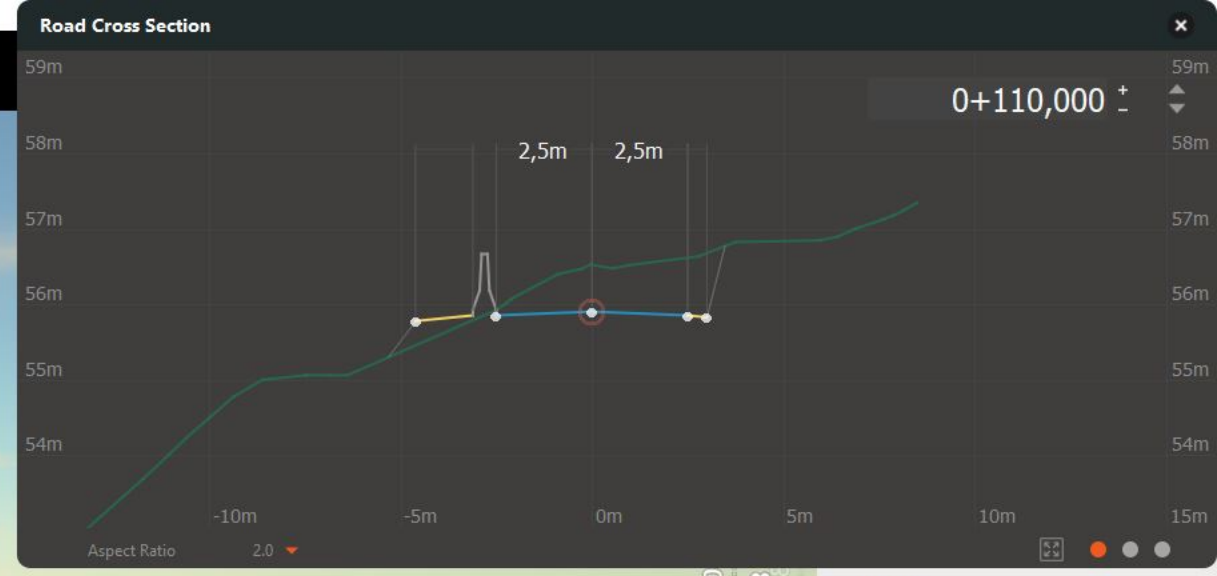
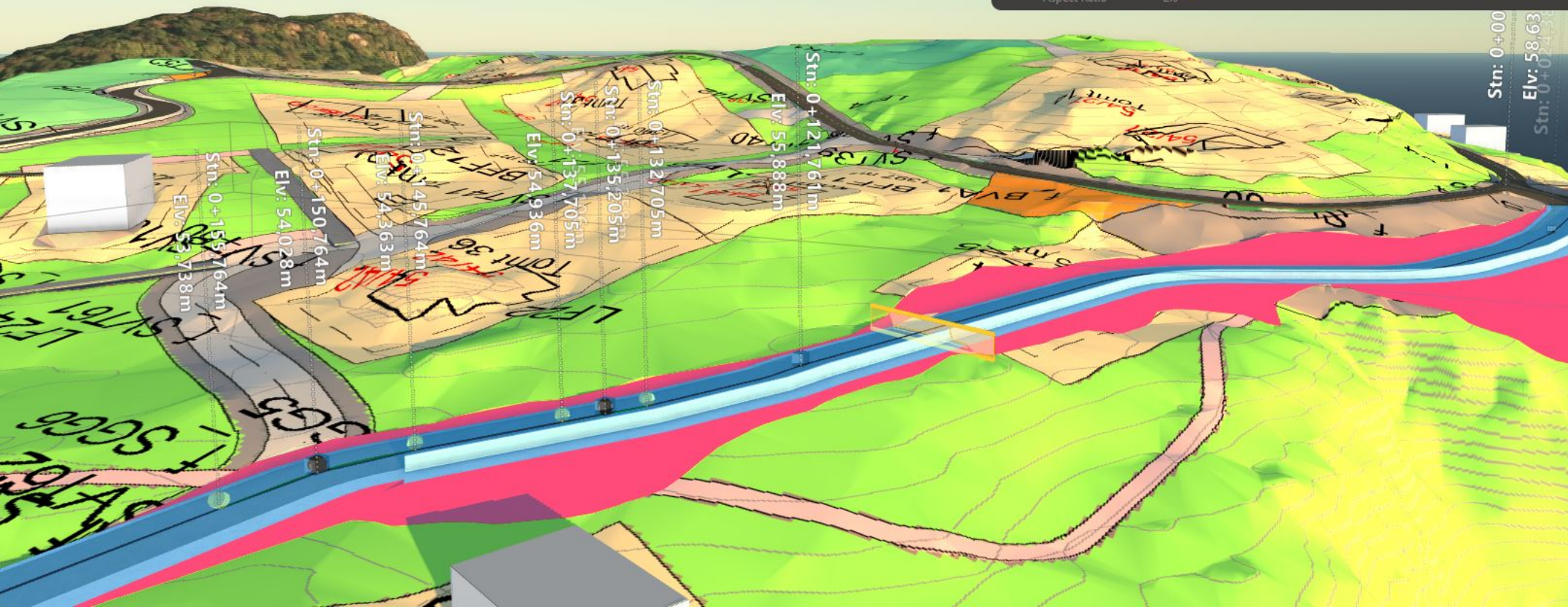
**Grading**

Material	Various values
Grading Method	Fixed Slope
Grading Limit	Various values
Cut Slope	0.500 : 1
Fill Slope	Various values

**Advanced**

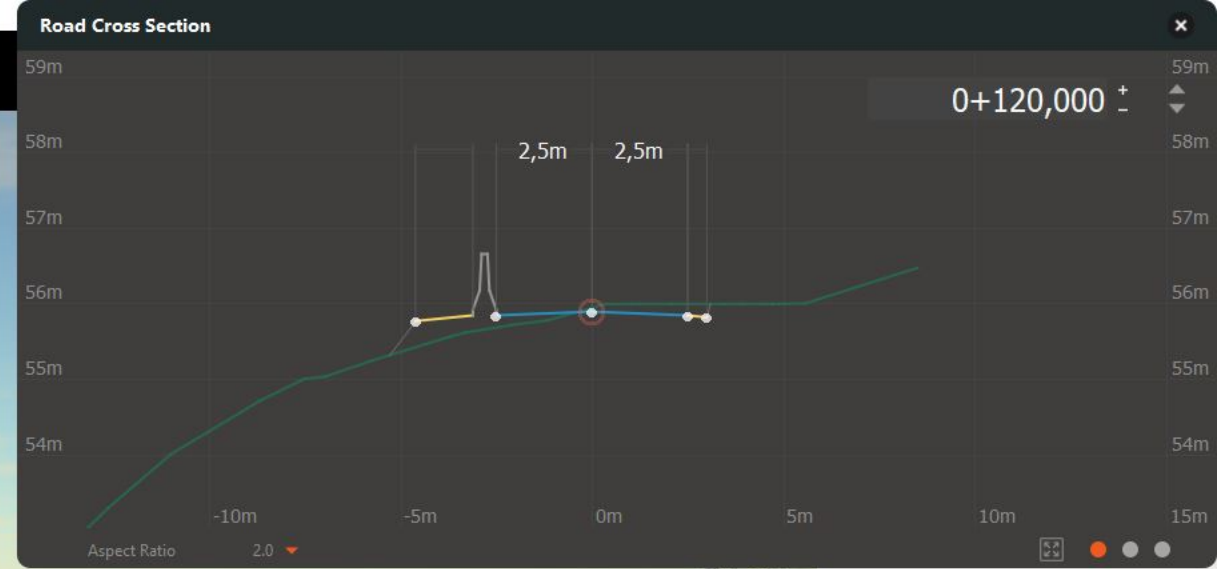
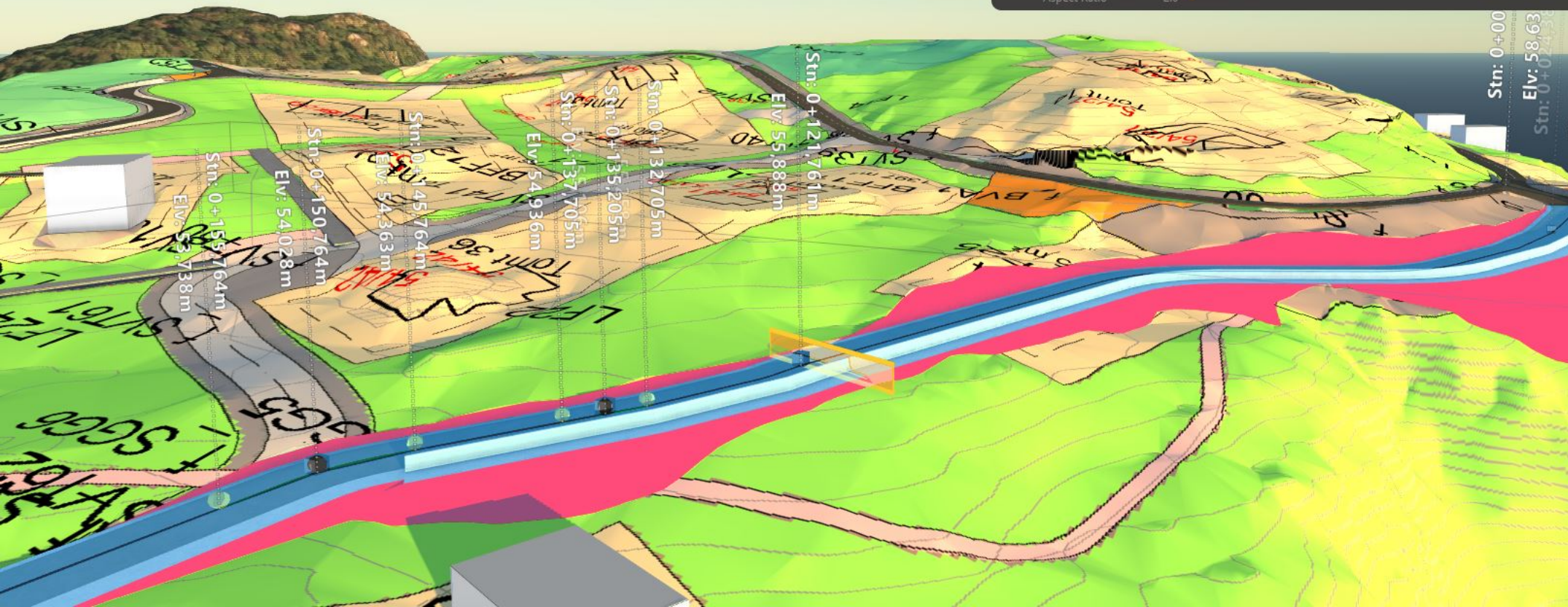
Data Source	Sketched Feature(s)
Tag	
User Data	
Tooltip	





Grade Range	0.10% - 10.83%
Description	Click to start typing...
Grading	
Material	Various values
Grading Method	Fixed Slope
Grading Limit	Various values
Cut Slope	0.500 : 1
Fill Slope	Various values
Advanced	
Data Source	Sketched Feature(s)
Tag	
User Data	
Tooltip	





**Grade Range** 0.10% - 10.83%

**Description**

Click to start typing...

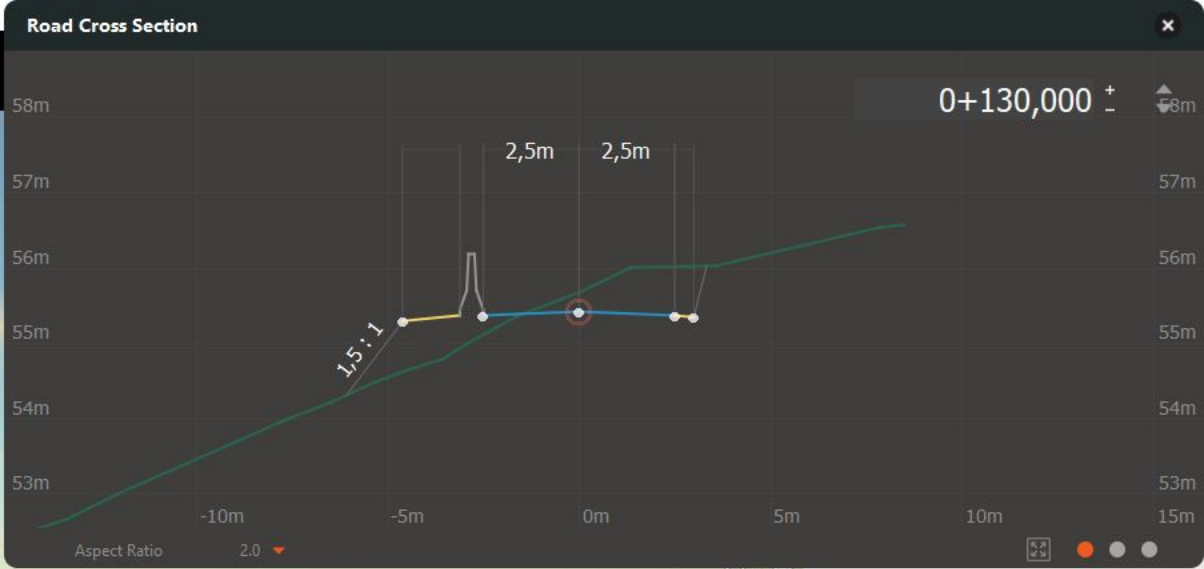
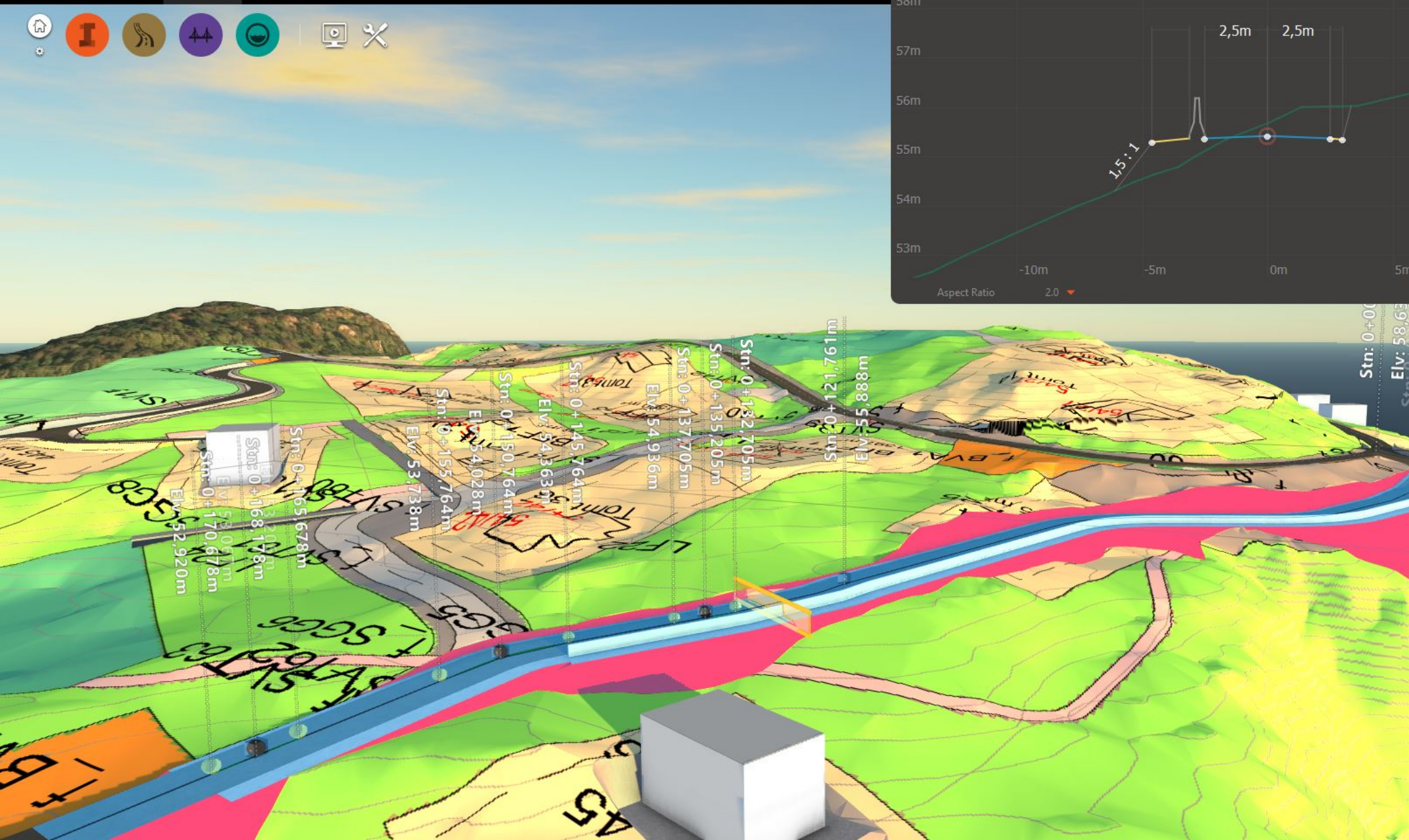
**Grading**

Material	Various values
Grading Method	Fixed Slope
Grading Limit	Various values
Cut Slope	0.500 : 1
Fill Slope	Various values

**Advanced**

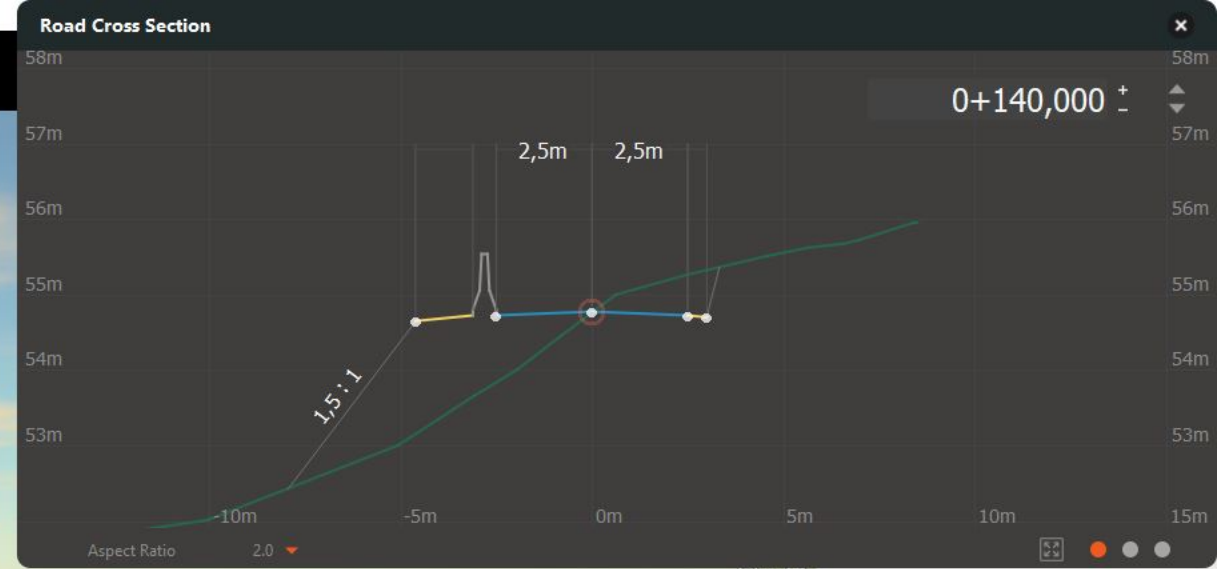
Data Source	Sketched Feature(s)
Tag	
User Data	
Tooltip	





Grade Range	0.10% - 10.83%
Description	Click to start typing...
Grading	
Material	Various values
Grading Method	Fixed Slope
Grading Limit	Various values
Cut Slope	0.500: 1
Fill Slope	Various values
Advanced	
Data Source	Sketched Feature(s)
Tag	
User Data	
Tooltip	



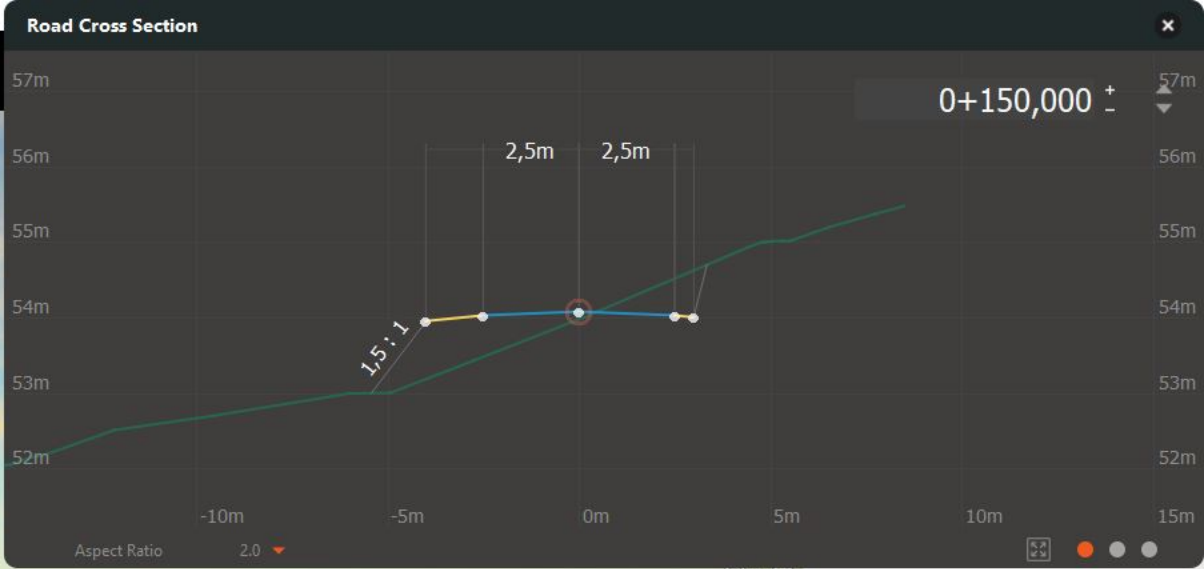


Station : 0+169,090m Offset : 9,721m  
 X: 7.008565 Y: 58.074826 Z: 51.157098 m

Grade Range	0.10 % - 10.83 %
Description	Click to start typing...
Grading	
Material	Various values
Grading Method	Fixed Slope
Grading Limit	Various values
Cut Slope	0.500 : 1
Fill Slope	Various values
Advanced	
Data Source	Sketched Feature(s)
Tag	
User Data	
Tooltip	







Grade Range	0.10% - 10.83%
Description	Click to start typing...
Grading	
Material	Various values
Grading Method	Fixed Slope
Grading Limit	Various values
Cut Slope	0.500: 1
Fill Slope	Various values
Advanced	
Data Source	Sketched Feature(s)
Tag	
User Data	
Tooltip	

